

Conference Sponsors

Albuquerque Historical Society, Janet Saiers, president,
www.albuqhistsoc.org

P. J. Wolff, Northern Insurance, Santa Fe and Las Vegas

Stephen & Jane Hochberg, Santa Fe

Robert Kahn, Santa Fe, in memory of his mother Jane Kahn

Harry's Roadhouse, Old Las Vegas Highway, Santa Fe

Marjorie Weinberg-Berman

Claire Grossman

Dorothy Amsden

Rabbi John T. Feldman, Albuquerque,
in memory of his mother Louise Taichert Feldman and
grandfather Joseph A. Taichert

The Rubin Family, Raton: Leon & Kathryn Rubin and their
children Randy & Tamar Rubin and Ron & Karen Rubin

The Barbara Bender Memorial Lox and Bagel Brunch is a tradition at the yearly NMJHS Fall Conference. The brunch is partially paid for by the interest from an endowment set up by her children. Mrs. Bender was a member of long standing who took an active interest in NMJHS activities.

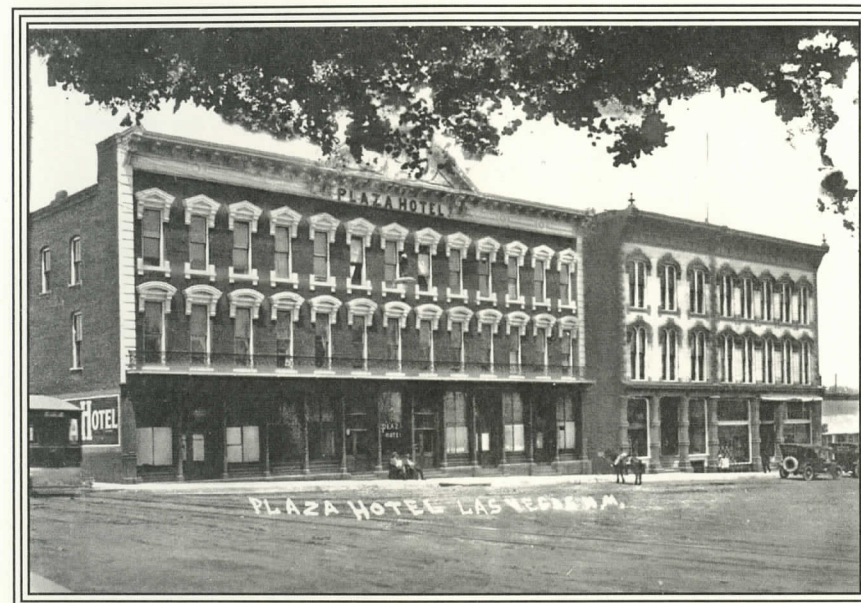
Conference Committee

Stanley M. Hordes
Barbara Baker
Ron Duncan-Hart
Robert N. Gale

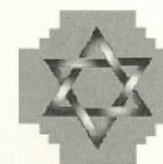
Carla Freeman
Noel Pugach
Dorothy Amsden

Adventures along the Santa Fe Trail:

The Jews of Las Vegas and Northeast New Mexico



New Mexico Jewish Historical Society 25th Anniversary Celebration



23rd Fall Conference, October 22 - 24, 2010
Plaza Hotel, Las Vegas, New Mexico

Speaker Biographies

The Honorable **M. Christina Armijo** serves as a judge on the United States District Court for the District of New Mexico. She received her Bachelor of Arts and Juris Doctor degrees from the University of New Mexico in 1972 and 1975, respectively. Judge Armijo began her law practice with a program that provided legal services to members of seven Indian pueblos in New Mexico. Three years later, she started her own private practice in her hometown of Las Vegas, New Mexico. Volunteer work and numerous honors embellish her career. A twelfth-generation New Mexican, Judge Armijo's grandfather, the late Judge Luis E. Armijo, was one of New Mexico's longest serving trial judges.

Florence Ilfeld Beier comes from the Ilfeld and Nordhaus clans. Her grandfather, Ludwig Ilfeld, was a nephew of Charles Ilfeld. Her grandmother, Minnie, was a niece of Adela Nordhaus, Charles's wife. Florence's father Max was born in Las Vegas in 1900 and grew up in the Ilfeld house on Eighth Street. Max returned from Boston to Las Vegas in 1931 with his wife and two children to live with his parents. In 1935 the family moved to Taos, where Florence lived until she married. After many moves, Florence now resides in San Mateo, California, with her husband Rolf. She is a mediator and writer.

Susan Calafate Boyle received her doctorate in American Social History from University of Missouri-Columbia. Her current research focuses on socioeconomic developments in New Mexico during the 19th century and a comparison on transportation models in the southwest United States and northwestern Argentina. As a National Park Service employee, Dr. Boyle is currently working as a planner for the National Trails Intermountain Region in Santa Fe. She is in charge of the comprehensive management plans for El Camino Real de los Tejas National Historic Trail, the Old Spanish National Historic Trail, and the feasibility study for additional routes of California, Oregon, Mormon Pioneer, and Pony Express national historic trails.

Laura M. Gonzales is currently a graduate student at Highlands pursuing an M.A. in Public Affairs with a Concentration in History. She worked on several projects with the Las Vegas City Museum beginning in 2008 as an Archival Contractor. As Humanities Consultant the following year, she helped to create "Las Vegas Alive!", an interactive learning game, and participated in the museum's Interpretive Planning Workshop. Laura attended the 2009 state Association of Museums Conference as a panel speaker. She is presently on the planning committee for the 2010 NMAM Conference to be held in Las Vegas in November.

Albuquerque native **Betty-Mae Hartman**, a granddaughter of Louis Ilfeld, graduated from the University of New Mexico in 1942 with a bachelors of business administration. Her husband, Leonard S. Hartman, was an Army Air Force officer who died in 1967. She has two children, five grandchildren, and five great-grandchildren. A businesswoman for many years, Mrs. Hartman served as president of La Luz chapter of the American Business Women's Association. She earned a private pilot's license and piloted her own plane. Mrs. Hartman is active in the Albuquerque Sister Cities Program, in which she served as president for six years. She has visited all eight sister cities and is currently making plans to visit the ninth addition, Rehovot, Israel.

Stanley M. Hordes holds a B.A. in History from the University of Maryland, an M.A. in Latin American History from the University of New Mexico, and a Ph.D. in Colonial Mexican History from Tulane University. From 1981 to 1985 he served as New Mexico State Historian. He is currently president of HMS Associates, Inc., Historical Research and Consulting, and is Adjunct Research Professor at the Latin American and Iberian Institute at the University of New Mexico. He is the author of several books and articles on the history of crypto-Judaism in New Mexico and the Spanish Caribbean, including *To the End of the Earth: A History of the Crypto-Jews of New Mexico*. Hordes is one of the founding members and a past president of the NMJHS.

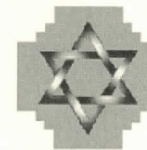
Katrina Immerman and her husband Michael moved to Las Vegas 15 years ago from Albuquerque, where they were longtime members of B'nai Israel Synagogue. A retired registered nurse, Katrina volunteers for several organizations, is a treatment guardian for people with mental illness, and belongs to Friends of the Museum and the Montefiore Cemetery Association. The Immermans are active participants in the Las Vegas Jewish community.

Alvin Korte completed his doctoral studies at the University of Denver in 1978. His area of interest was the family life of older citizens. He is at present semi-retired working with domestic violence offenders and writing. He is completing a book to be titled *Nosotros: A Study of Hispano Everyday Meanings*. He is also working on a part of a larger study on German immigrant families in Mora in the Territorial era as well as a study of Fernando Baca, *fletero*, advocate, poet and legislator from Anton Chico.

Melanie LaBorwit is a seasoned Museum Educator with broad experience in museums with cultural, scientific and historical missions. She currently works with the Nuclear Science and History Museum in Albuquerque. Previous affiliations include the Anderson-Abruzzo Albuquerque International Balloon Museum, the Indian Pueblo Cultural Center, and the City of Las Vegas Museum and Rough Rider Memorial Collection, where she initiated programs focused on Northern New Mexico traditions. She has researched New Mexico Jewish history, especially in Las Vegas and San Miguel counties, and has been involved with the NMJHS over many years. She is a Certified Interpretive Guide and currently serves as a member of the Board of Directors for the New Mexico Association of Museums.

(speakers' biographies continue on page 9)

Adventures along the Santa Fe Trail Pre-Conference Activities



Friday afternoon, October 22

- 2:00 - 4:30 Conference registration in Plaza Hotel
- 5:30 Dinner on your own, El Fidel Restaurant, 510 Douglas Avenue (1 mile from Plaza Hotel)
- 7:30 Shabbat Service, Old Congregation Montefiore (now the Neuman Catholic Student Center), corner of Columbia and 8th Streets, with Oneg Shabbat to follow at Plaza Hotel

Saturday morning, October 23

- 7:30 - noon Conference registration in Plaza Hotel
- 8:15 Walking Tour of Historical Las Vegas, followed by visit to Montezuma Castle, conducted by Marcus Gottschalk, Las Vegas. Depart from Plaza Hotel lobby.
- 12:00 noon Buffet lunch served in the Plaza Hotel Ilfeld Ballroom

Adventures along the Santa Fe Trail Conference Schedule

Saturday afternoon, October 23

Opening Remarks: Stanley M. Hordes, Conference Chairman

*1:00 - 2:15 Session I, Plaza Hotel, Ifeld Ballroom
Chairperson: Alvin Korte, New Mexico Highlands University*

“Hispanic Contributions to the Santa Fe Trail Trade, 1821 - 1880,” Susan Calafate Boyle, National Park Service, Santa Fe

“Las Vegas: Place of Encounter,” Laura M. Gonzales, New Mexico Highlands University, Las Vegas

—————
break
—————

*2:30 - 4:00 Session II, Plaza Hotel, Ifeld Ballroom
Chairperson: Naomi Sandweiss, University of New Mexico*

“Synagogues on the Santa Fe Trail – Slide Lecture on the History of Temple Aaron (Trinidad, Colorado) & Congregation Montefiore (Las Vegas),” Sharon Niederman, Raton

“Jewish Pioneers: History of the Jewish Community of Las Vegas,” Melanie LaBorwit, Albuquerque

“The Jewish Commercial Presence in Mora County, New Mexico, 1860s to the 1940s: A Brief Overview,” Noel Pugach, University of New Mexico, Albuquerque

*4:00 - 5:00 Session III: Plaza Hotel, Ifeld Ballroom
Chairperson: Stanley M. Hordes, University of New Mexico*

Panel Discussion: Crypto-Jews in Las Vegas and Northeast New Mexico

Orlando Mondragón, Santa Fe (San Luis, Colorado)
Hon. M. Christina Armijo, Albuquerque (Las Vegas)

—————
break
—————

*6:00 - 7:00 Reception in Plaza Hotel, harpist Sandi Ludescher
7:00 - 10:00 Dinner and program in Plaza Hotel, Ifeld Ballroom*

NMJHS 25th anniversary celebration: Dorothy Corner Amsden, NMJHS President, Los Alamos

Master of Ceremonies: Stanley M. Hordes

Welcome: Hon. Alfonso E. Ortiz, Jr., Mayor of Las Vegas

Greetings from representatives of the Texas Jewish Historical Society and other historical societies

Reflections on the establishment of the New Mexico Jewish Historical Society, by A. David Scholder, NMJHS founder

Concert of nineteenth-century liturgical music from Congregation Montefiore: Aaron Wolf, soloist, and André Garcia-Nuthman, accompanist

Conference Schedule

Sunday morning, October 24

9:00 - 10:30 Session IV: Plaza Hotel, Ilfeld Ballroom
Chairperson: Noel Pugach, University of New Mexico

Panel Discussion: Legacy of Las Vegas's and Northeast New Mexico's Rich Jewish Past:

Betty Mae Hartman, Albuquerque
Nancy Paxton, Albuquerque
Florence Ilfeld Beier, San Mateo, California

————— break —————

10:45 - 12:00 Session V: Plaza Hotel, Ilfeld Ballroom
Chairperson: Melanie LaBorwit, Albuquerque

Panel Discussion: Renaissance of the Las Vegas Jewish Community:

Diana Presser, Las Vegas
Katrina Immerman, Las Vegas
Nancy Terr, Albuquerque

12:00 noon Barbara Bender Memorial Lox and Bagel Brunch



Author, journalist and photographer **Sharon Niederman** journeyed west to earn her M.A. at University of Colorado, Boulder. Her personal essays and articles on food, travel, history, and culture of New Mexico have appeared in virtually every regional and many national publications. *New Mexico's Tasty Traditions* (*New Mexico Magazine*, 2010) is her tenth book. She is president of New Mexico Press Women, member of the Society of American Travel Writers, and recipient of a 2010 New Mexico Historical Records Advisory Board preservation grant. She is former president and archivist of NMJHS. Her current book project is *Shrines & Signs: Spiritual Journeys across New Mexico* (The Countryman Press, 2012).

Nancy Nordhaus Mincses Paxton was born and raised in Albuquerque. She attended Albuquerque High School, Stephens College, and the University of New Mexico. She has three children and nine grandchildren. She worked in the casualty insurance business for agencies in Albuquerque, Santa Fe, and Hobbs and received her agent's license in 1968. Mrs. Paxton volunteered for the Albuquerque Convention and Visitors Bureau for 18 years, helping visitors at the Albuquerque Sunport Information Desk. She is an avid rose gardener, plays duplicate bridge, likes to travel, and stocks fish at Trout Springs, Gallinas Canyon, New Mexico, which is her family summer home, built by her grandfather, Max Nordhaus, in 1898.

Diana Presser worked as a legal secretary for some of New York's most prestigious law firms from 1965 -1996, when her husband retired, and they both moved to Las Vegas, New Mexico. Diana pursued her B.A. degree in Elementary Education, graduated in 2000, and obtained her New Mexico license for K-12 with an endorsement for secondary social studies. Diana taught second grade in Pecos and then taught the first all-day kindergarten at Sierra Vista Elementary School in Las Vegas. Her son, Paul, moved to Las Vegas some years afterwards with his wife and children. Diana has always participated in the Jewish community and presently teaches Hebrew to adults. Her interests include photography, travel, and needlepoint.

Noel H. Pugach is Professor Emeritus of History at the University of New Mexico, where he has taught since 1968. He later received his M. A. and Ph.D. in history from the University of Wisconsin. Professor Pugach specializes in United States Foreign Relations and Jewish History. He has published extensively in both areas. He was the lead historical consultant for the NMJHS Video Archive Project, for which he wrote studies of eight New Mexico Jewish pioneer families. He published an article on Jewish Las Vegas in the Spring 2010 issue of *B'nai Brith Magazine*. Dr. Pugach recently completed a two-year term as President of the New Mexico Jewish Historical Society.

Naomi Sandweiss serves as editor of the quarterly newsletter *Legacy*. In 2010, Naomi received the NMJHS Dr. Alan P. and Leona Hurst Award for outstanding service to the Society and New Mexico Jewish History. She served as a volunteer for the Jewish Pioneers Oral History Project, and wrote the NMJHS booklet on the Gusdorf family of Taos. In 2011, Naomi's book, *Jewish Albuquerque 1860-1960*, will be published by Arcadia Press. Naomi received a B.A. in American Studies from Dickinson College in Carlisle, Pennsylvania, and an M.A. in Education from Bowling Green State University, Ohio. She is currently employed by the University of New Mexico.

Nancy Terr moved with her family from Michigan to Las Vegas, New Mexico, in 1958, a year after Congregation Montefiore closed. The five Terr children attended religious school and services in Santa Fe. Nancy went all the way through school in Las Vegas, she and her sister being the only Jewish kids in their (respective) classes. So, Nancy was happy to support the re-establishment of a local Jewish community, something that she missed growing up. She and her family have been participating in local Jewish events since, and Nancy's son celebrated his Bar Mitzvah at Montefiore in 2002. Nancy lives in Albuquerque and teaches in Bernalillo.

NMJHS Founder

A. David Scholder founded the New Mexico Jewish Historical Society as a grass-roots enterprise in 1979; it received its 501(c)(3) status in 1985. For the past twenty-five years he has worked in the non-profit community drawing on his skills in financial planning for philanthropy. CEO of Philanthropic Strategies, based in New York City, Mr. Scholder is a frequent speaker at professional conferences and national meetings. He is the author of "Reluctant Pilgrims," an article on the history of the Jews of New Mexico that appeared in the September 1982 issue of *New Mexico Magazine*. Currently he is writing his first book entitled "Jewish Families on the Santa Fe Trail."

NMJHS Officers and Board of Directors

Dorothy Corner Amsden, President
 Carla Freeman, Vice President
 Sandra Brintnall, Recording Secretary
 Anthony A. Amsden, Corresponding Secretary
 David Dunmar, Treasurer
 Noel Pugach, Ph.D., Immediate Past President

Ron Duncan-Hart, Ph.D.	Anita P. Miller
Robert N. Gale	Emily B. Rudin
Claire Grossman	Naomi Sandweiss
Harold Melnick	Sandford H. Siegel
Betsy Messeca	Marjorie Weinberg-Berman

NMJHS Administrator: Ruth Carter

*NMJHS is beneficiary agency of the
 Jewish Federation of New Mexico*