

# NMJHS Conference Highlights

Northeast New Mexico was home to a number of Jewish merchant families starting in the mid-1800s. This conference will highlight Hispanic participation in the Santa Fe Trail trade and the history of Las Vegas, the synagogues on the Santa Fe Trail, and the Jews of Las Vegas and Mora. Presentations will also cover the crypto-Jews in Las Vegas and northeast New Mexico, the rich Jewish past of Las Vegas and northeast New Mexico, and the renaissance of the Las Vegas Jewish community.

Pre-conference activities include Friday night dinner (on your own dime at El Fidel restaurant) at 5:30, and a shabbat service at 7:30 followed by oneg shabbat. You may register for the 8:30 walking tour on Saturday morning of historical Jewish Las Vegas, followed by a bus tour of Montezuma Castle (at the United World College) and Montefiore Cemetery, the oldest Jewish cemetery in New Mexico.

The conference begins at 12 noon on Saturday, October 23, with a buffet lunch in the hotel ballroom. The program starts at 1 p.m. in the same location. There will be a reception at 6 p.m. and dinner at 7 p.m. Sunday morning the program begins in the ballroom at 9 a.m. and continues until noon, when there will be a lox and bagel brunch.

The conference registration desk will be open on Friday afternoon, October 22, from 2 to 4:30 p.m., and on Saturday morning from 10 to 12 noon. Three meals are included in your registration fee: lunch and dinner on Saturday and brunch on Sunday.

Make your own hotel reservations by telephoning the Plaza Hotel at 1-505-425-3591 and ask for the NMJHS rate. Single \$69, double \$79, deluxe \$109. Breakfast is included in your hotel rate. The hotel has no off-street parking - you may park in front of the hotel or anywhere around the plaza.

For more information:

NMJHS office: 505-348-4471

E-mail: [nmjhs@jewishnewmexico.org](mailto:nmjhs@jewishnewmexico.org)

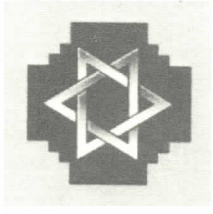
Web site: [www.nmjhs.org](http://www.nmjhs.org)

NON-PROFIT ORGANIZATION U.S. POSTAGE PAID PERMIT NO. 1322 ALBUQUERQUE, NM

New Mexico Jewish Historical Society 5520 Wyoming Blvd. NE Albuquerque, NM 87109

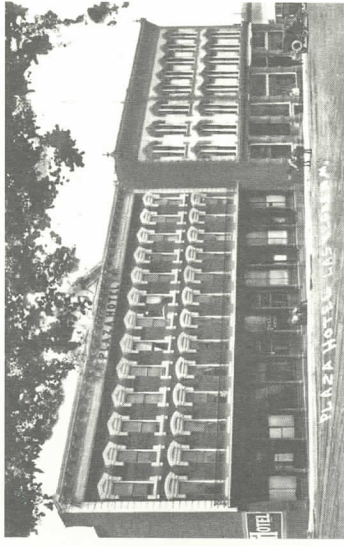
## Adventures along the Santa Fe Trail

NMJHS is a beneficiary agency of the Jewish Federation of New Mexico

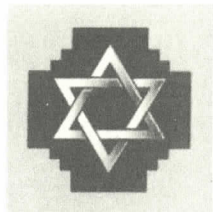


New Mexico Jewish Historical Society Celebrating 25 Years

# 23rd Fall Conference



Plaza Hotel Las Vegas, New Mexico October 22 - 24, 2010



NEW MEXICO JEWISH HISTORICAL SOCIETY  
**2010 Conference Preview**

Adventures along the Santa Fe Trail:  
 The Jews of Las Vegas and Northeast New Mexico

**Friday, October 22**

**Pre-Conference Activities**

El Fidel Restaurant Dinner  
 (on your own)

Shabbat Service  
 Old Congregation Montefiore followed  
 by Oneg Shabbat at Plaza Hotel

**Saturday, October 23**

Pre-Conference tour of Historic Jewish Las Vegas,  
 followed by visit to Montezuma Castle and  
 Congregation Montefiore Cemetery.  
 Conducted by Marcus Gottschalk, Las Vegas

**Conference Opening Lunch**

**Session I**

- “Hispano Contributions to the Santa Fe Trade, 1821-1880” -- Susan Calafate Boyle, National Park Service
- “Las Vegas: Place of Encounter” Laura Gonzales, New Mexico Highlands University

**Session II**

- “Synagogues on the Santa Fe Trail - Slide Lecture on the History of Temple Aaron (Trinidad, Colorado) & Congregation Montefiore (Las Vegas)” -- Sharon Niederman, Raton
- “Jewish Pioneers: Legacy of Jewish Settlers in Las Vegas” -- Melanie LaBorwit, Albuquerque
- “The Jewish Commercial Presence in Mora County New Mexico, 1860s to the 1940s: A Brief Overview”-- Noel Pugach, University of New Mexico

**Session III: Panel Discussion**

**Crypto-Jews in Las Vegas and Northeast New Mexico**  
 Isabelle Medina Sandoval, Santa Fe (Mora)  
 Orlando Mondragón, Santa Fe (San Luis, Colorado)  
 Hon. M. Christina Armijo, Albuquerque (Las Vegas)

**Reception and Dinner at Plaza Hotel**

**Concert of Nineteenth-Century Liturgical Music  
 from Congregation Montefiore**

**Sunday, October 24**

**Session IV: Panel Discussion**

**Legacy of Las Vegas' and  
 Northeast New Mexico's Rich Jewish Past**  
 Betty Mae Hartman, Albuquerque  
 Gerald Meyer, Laramie, Wyoming  
 Nancy Paxton, Albuquerque  
 Mortimer Herzstein, San Francisco

**Session V: Panel Discussion**

**Renaissance of the Las Vegas Jewish Community**  
 Diana Presser and Kate Immerman

**2010 NMJHS Fall Conference Registration**

To register for the 2010 NMJHS Conference, fill out this form and mail it with your payment to:

NMJHS Conference Registration  
 5520 Wyoming Blvd. NE  
 Albuquerque, NM 87109

- Member \$110    Non-member \$125  
 Day rate \$30    Pre-conference tour \$20

(please print)

Name (s) \_\_\_\_\_

Address \_\_\_\_\_

City \_\_\_\_\_ State \_\_\_\_\_ Zip \_\_\_\_\_

Phone (daytime) \_\_\_\_\_

Email \_\_\_\_\_

Registration fee \_\_\_\_\_ persons \_\_\_\_\_ = \_\_\_\_\_

Pre-conference tour \_\_\_\_\_ persons \_\_\_\_\_ = \_\_\_\_\_

Contribution to offset conference costs \_\_\_\_\_

Total amount of payment \_\_\_\_\_

- Check    Visa    Mastercard

Signature \_\_\_\_\_

Exp. date \_\_\_\_\_

Meal preference for Saturday night  
 (indicate number of persons)

\_\_\_\_\_ prime rib \_\_\_\_\_ trout \_\_\_\_\_ vegetarian

If you are not an NMJHS member and wish to join the organization, you can qualify for the member rate of \$110 per person. Fill out the membership form on the NMJHS web site and send it in electronically or print it out and submit it with your conference registration form.

Cut here